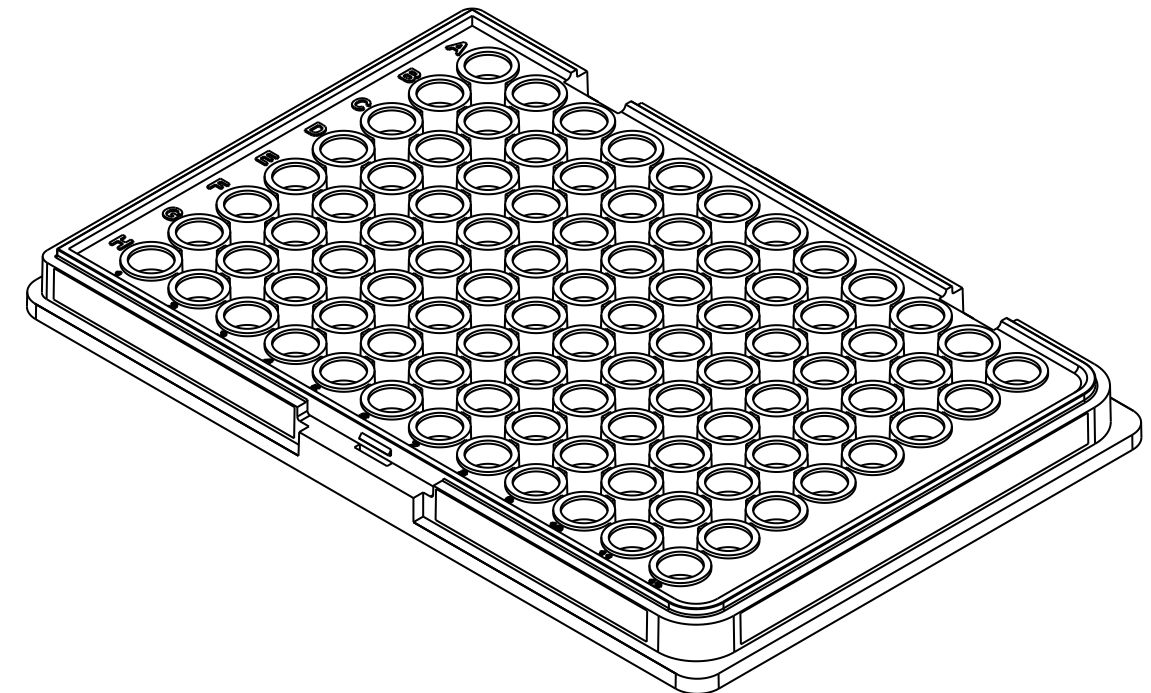


NOTES: UNLESS OTHERWISE SPECIFIED.

1. MATERIAL: POLYPROPYLENE. VENDOR: EXXON MOBIL. P/N: PP 9074MED OR HUNTSMAN 13R25A. NO REGRIND PERMITTED.
2. COLOR: SEE TABLE FOR P/N AND COLOR TO MATCH CUSTOMER SUPPLIED REFERENCE.
3. FINISH: SPI B-3 OR BETTER UNLESS STATED OTHERWISE.
4. FLASH ALLOWANCE SHALL NOT EXCEED .1MM. GATE AND EJECTOR PIN MARKS SHALL BE FLUSH TO .25MM BELOW THE SURFACE.
5. WALL THICKNESS: 1.5MM UNLESS OTHERWISE STATED.
6. DRAFT: 1 DEG UNLESS OTHERWISE STATED.
7. ALL DIMENSIONS SHOWN ARE REFERENCED TO THE SOLID MODEL SUPPLIED BY BIOMATRICA WITH THE "FILENAME" SHOWN IN THE TITLE BLOCK.
8. TOLERANCE: 0-50MM: +/- .2MM. 50-150MM: +/- .25MM.
9. AREAS TO BE TEXTURED TO MOLD-TECH 1055-1, MOLD-TECH 11000 OR EQUIVALENT. (TO MAKE SURFACE HAND WRITTEN INK COMPATIBLE)
10. FONT: ARIAL. FONT STYLE: BOLD. HEIGHT: 2.5MM. SPACING: 1.0MM. EMBOSS HEIGHT: .25MM. CENTER TEXT ON CORRESPONDING ROWS.
11. FONT: ARIAL. FONT STYLE: REGULAR. HEIGHT 1.5MM. SPACING: 1.0MM. EMBOSS HEIGHT: .25MM. CENTER TEXT ON CORRESPONDING COLUMNS.
12. FONT: ARIAL. FONT STYLE: BOLD. HEIGHT: 2.0MM. SPACING: 1.05MM. EMBOSS HEIGHT: .25MM. MAKE TEXT TO BE ON REMOVABLE INSERTS.
13. FONT: ARIAL. FONT STYLE: BOLD. HEIGHT: 3.5MM. SPACING: 1.05MM. EMBOSS HEIGHT: .25MM. MAKE TEXT TO BE ON REMOVABLE INSERTS.
14. FONT: GEORGIA. FONT STYLE: BOLT ITALIC. HEIGHT 3.5MM. SPACING: 1.05MM. EMBOSS HEIGHT: .25MM. MAKE TEXT TO BE ON REMOVABLE INSERTS.
15. PARTS SHALL BE CLEAN AND FREE OF ALL FOREIGN MATTER WHEN DELIVERED.
16. PARTS MAY BE BULK PACKAGED FOR SHIPMENT. SHIPPING BOX AND/OR CONTAINER TO BE CLEARLY MARKED OR LABELED WITH PART NO., REV. NO., PRODUCTION DATE AND QUANTITY OF PARTS ENCLOSED.
17. OVALS ON DIMENSION TEXT ARE INSPECTION DIMENSIONS.

| REVISIONS |   |            |          |
|-----------|---|------------|----------|
| REV.      | DESCRIPTION   | DATE       | APPROVED |
| B         | CHANGED TEXTURES, ADDED RIBS, CHANGED LOCKING FEATURE | 8/22/2005  |          |
| C         | ADDED TRADEMARK SYMBOLS                               | 9/27/2005  |          |
| D         | ADDED RADII IN WELLS<br>CHANGED TEXTURE               | 11/17/2005 |          |
| E         | CHANGED BOTTOM OF WELLS                               | 1/11/2006  |          |
| F         | CHANGED WELL SHAPE TO "BULLET" PROFILE                | 3/2/2006   |          |
| G         | CHANGED LENGTH AND WIDTH AND TOLERANCES               | 3/30/2006  |          |



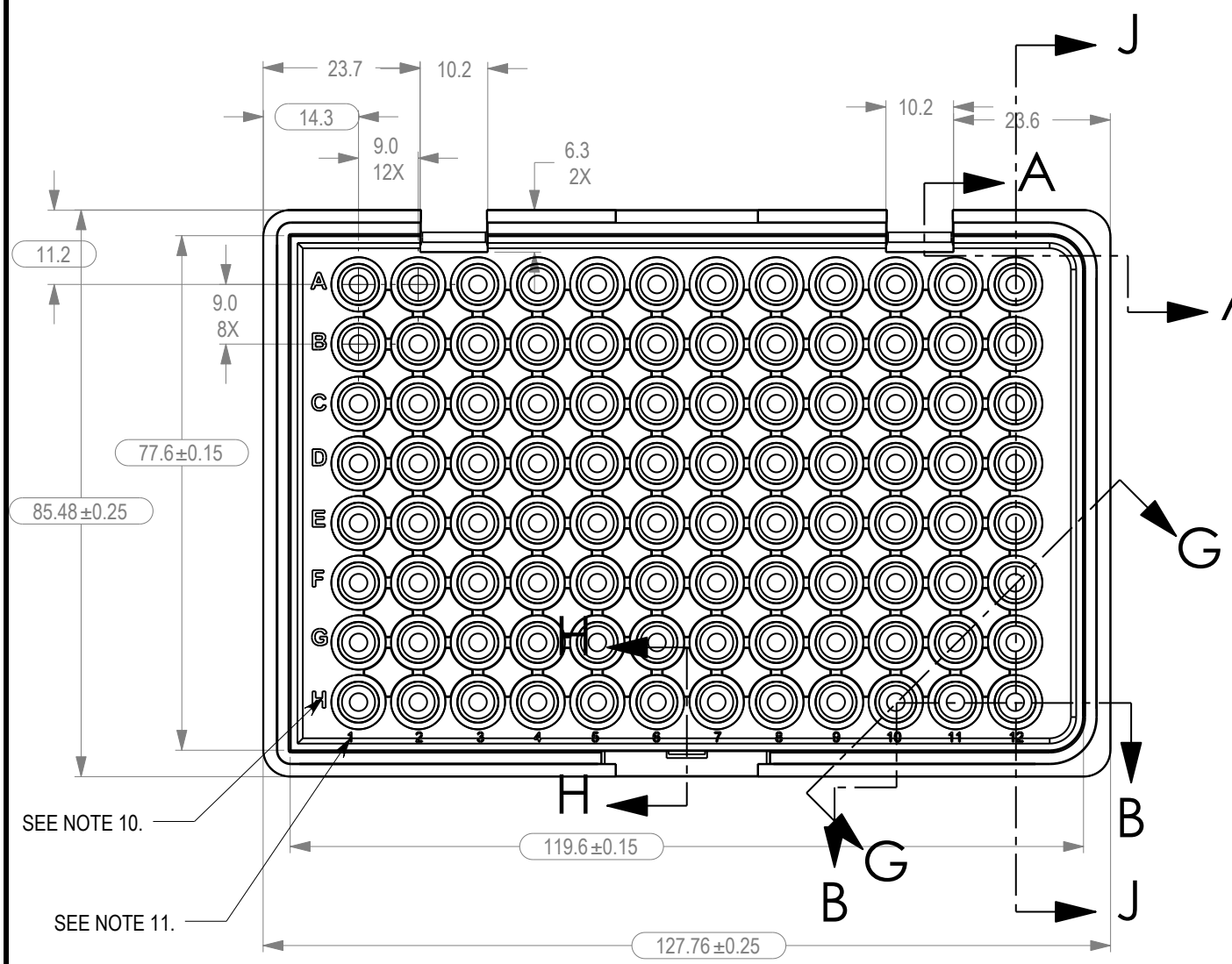
| P/N:      | COLOR:            |
|-----------|-------------------|
| 10001-001 | CLEAR             |
| 10001-002 | PMS#137C (ORANGE) |
| 10001-003 | PMS#285C (BLUE)   |
| 10001-004 |                   |
|           |                   |
|           |                   |

|   |  |              |   |  |
|---|--|--------------|---|--|
| UNLESS OTHERWISE SPECIFIED DIMENSIONS ARE IN MILLIMETERS. TOLERANCES: | DO NOT SCALE DRAWING<br>THIRD ANGLE PROJECTION |              | <b>EXPERTISE ENGINEERING</b><br>(858) 642-7639 WWW.EXP-ENG.COM<br>4186-J Sorrento Valley Blvd., San Diego, CA |  |
|   | APPROVALS                                      | MONTH/DAY/YR |   |  |
| MATERIAL: SEE NOTES   | DRAWN  | SEED         | 4/20/05   | TITLE<br><b>TRAY, 2.4MM SIDES,<br/>96 WELLS X 100uL, (COLOR)</b> |
|   | ENGINEER                                       | SEED         | 4/20/05   |  |
|   | ENGINEERING                                    | --           | --  |  |
|   | CHECKER  | --           | --  |  |
| FINISH: SEE NOTES   | MFG  | ENG          | --  | SIZE B DWG. NO. <b>10001-XXX</b> REV. <b>G</b>                   |
|   | REGULATORY                                     | --           | --  | SCALE 1:1 PDM FILENAME 10001-XXX-G-Tray SH 1 OF 4                |

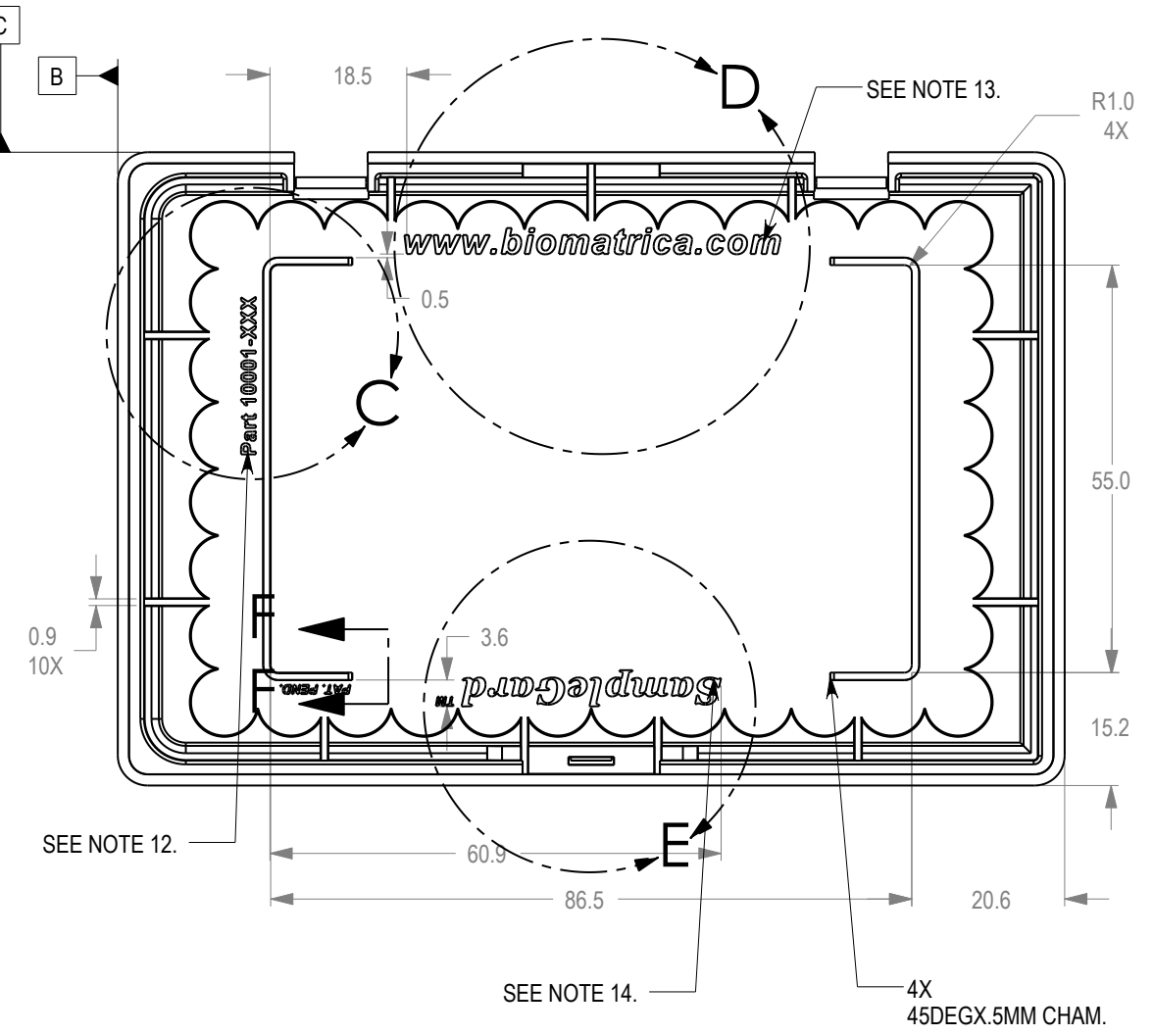
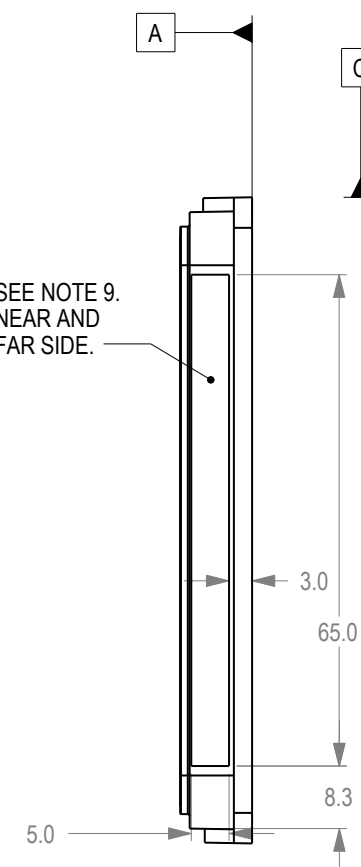
THIS DOCUMENT CONTAINS CONFIDENTIAL INFORMATION. DO NOT DISCLOSE TO OTHERS EXCEPT AS AUTHORIZED BY EXPERTISE ENGINEERING.

**10001-XXX REV: G**

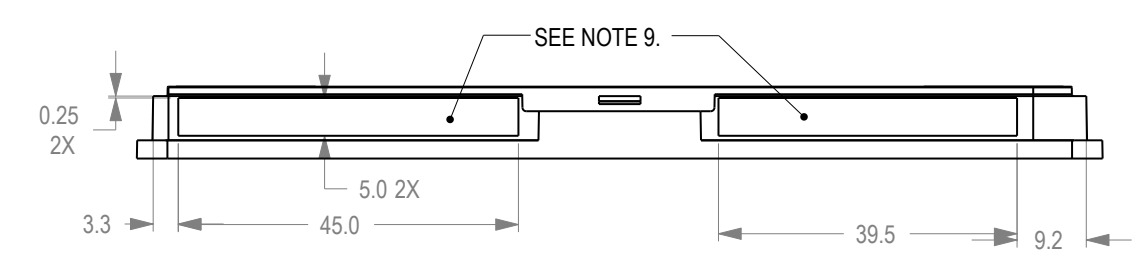
| REVISIONS |             |      |          |
|-----------|-------------|------|----------|
| REV.      | DESCRIPTION | DATE | APPROVED |
| -         | See Sheet1  | -    | -        |



SEE NOTE 9.  
NEAR AND  
FAR SIDE.



SEE NOTE 10.  
SEE NOTE 11.

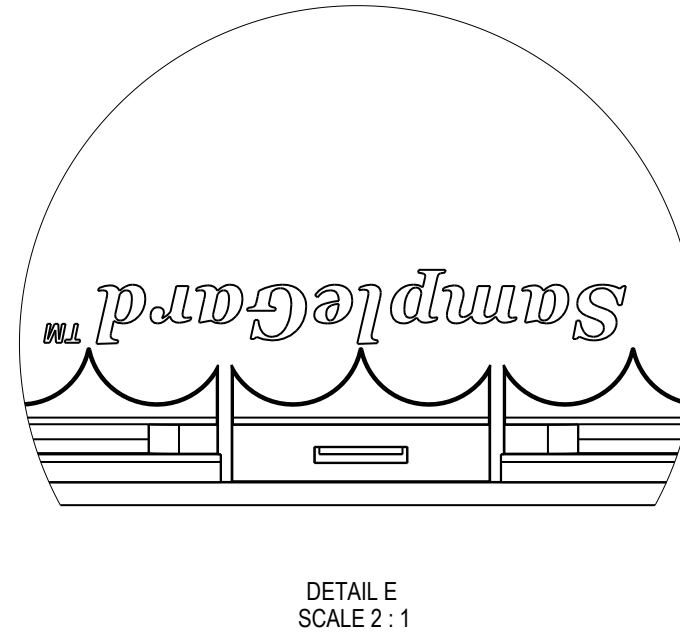
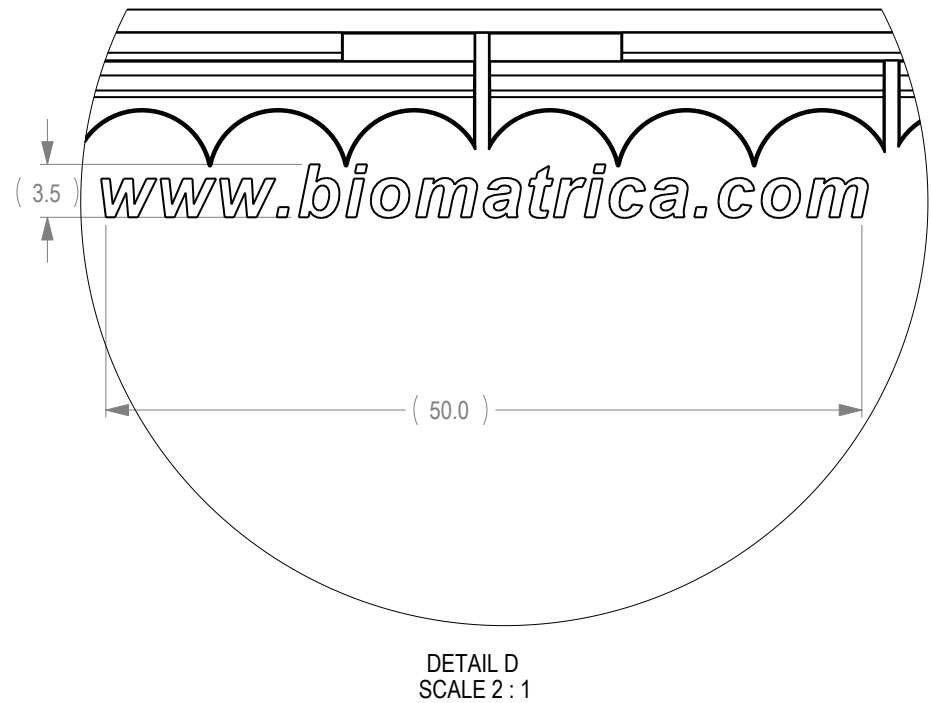
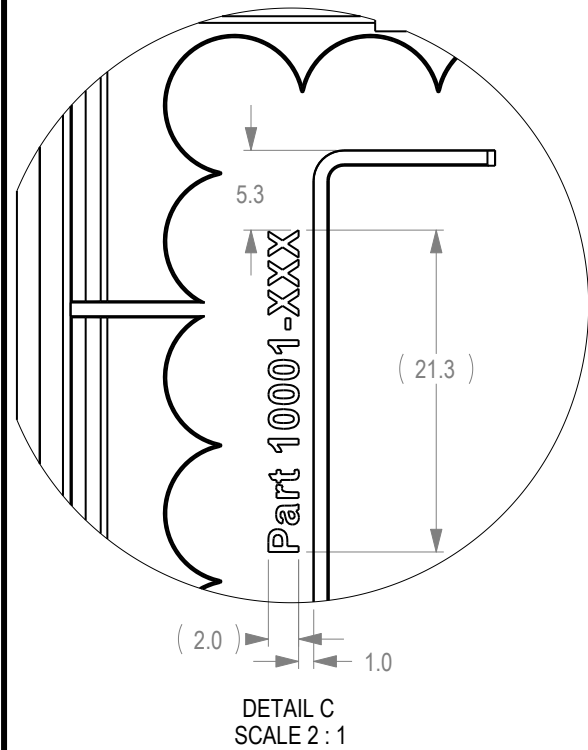
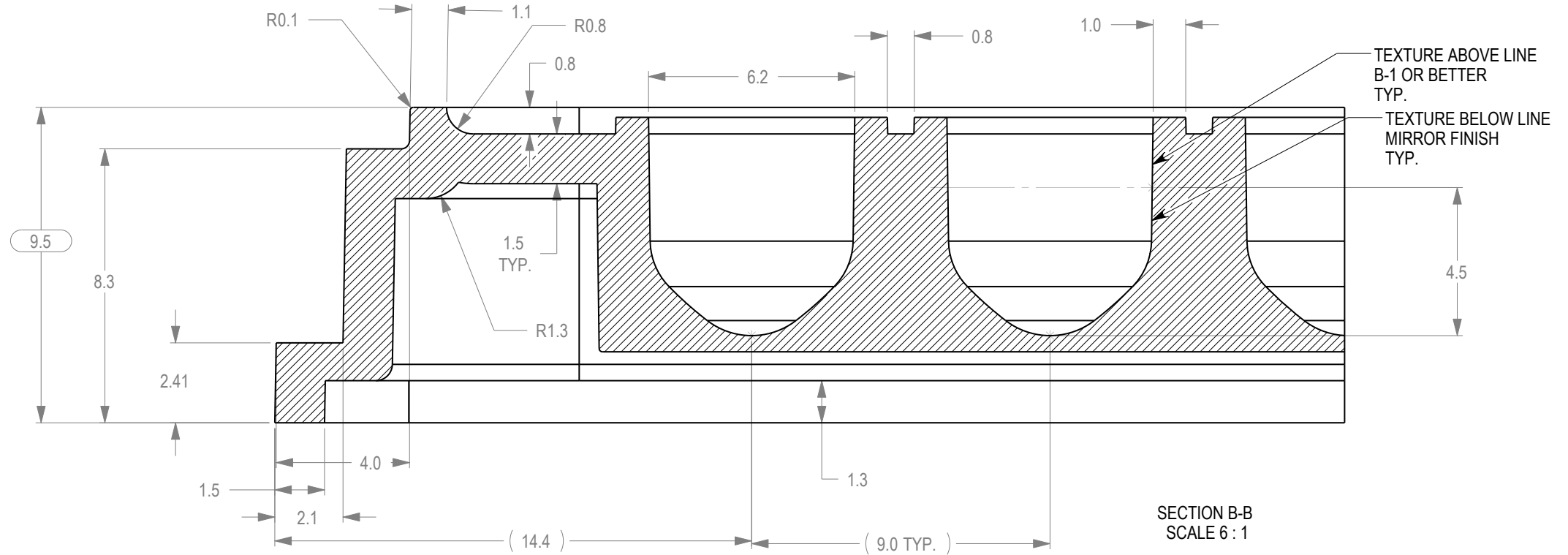
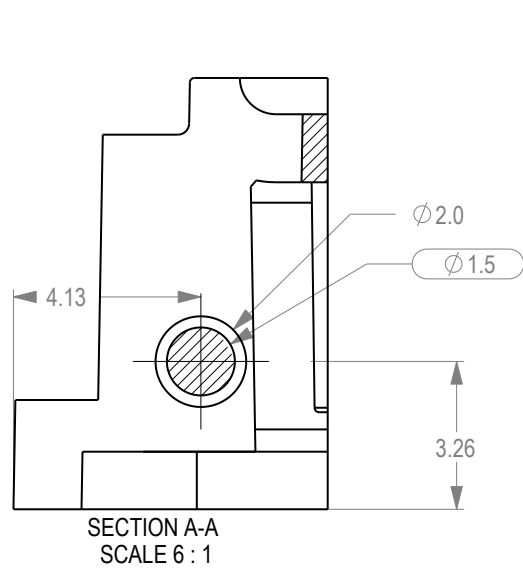


THIS DOCUMENT CONTAINS CONFIDENTIAL INFORMATION. DO NOT DISCLOSE TO OTHERS EXCEPT AS AUTHORIZED BY EXPERTISE ENGINEERING.

**10001-XXX REV: G**

|   |          |                         |           |
|---|----------|-------------------------|-----------|
| <b>EXPERTISE ENGINEERING</b>                                  |          |                         |           |
| (858) 945-6832  |          | WWW.EXP-ENG.COM         |           |
| TITLE <b>TRAY, 2.4MM SIDES,<br/>96 WELLS X 100uL, (COLOR)</b> |          |                         |           |
| SIZE  | DWG. NO. | 10001-XXX REV. <b>G</b> |           |
| SCALE   | PDM      | FILENAME                | SH 2 OF 4 |
| 1:1   | G        | 10001-XXX-G-Tray        |           |

| REVISIONS |             |      |          |
|-----------|-------------|------|----------|
| REV.      | DESCRIPTION | DATE | APPROVED |
| -         | See Sheet1  | -    | -        |



**EXPERTISE ENGINEERING**  
 (858) 945-6832 WWW.EXP-ENG.COM

TITLE **TRAY, 2.4MM SIDES,  
96 WELLS X 100uL, (COLOR)**

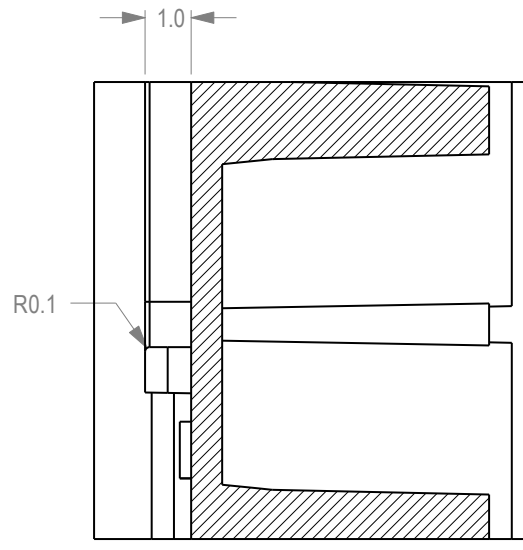
SIZE B DWG. NO. **10001-XXX** REV. **G**

SCALE 1:1 PDM G FILENAME 10001-XXX-G-Tray SH 3 OF 4

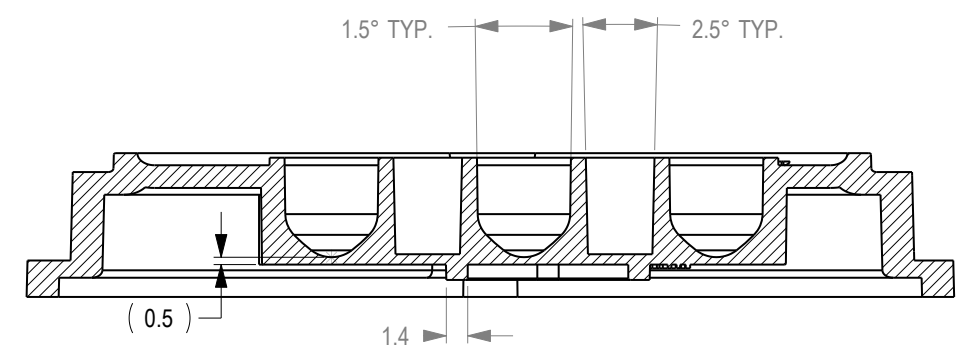
THIS DOCUMENT CONTAINS CONFIDENTIAL INFORMATION. DO NOT DISCLOSE TO OTHERS EXCEPT AS AUTHORIZED BY EXPERTISE ENGINEERING.

**10001-XXX REV: G**

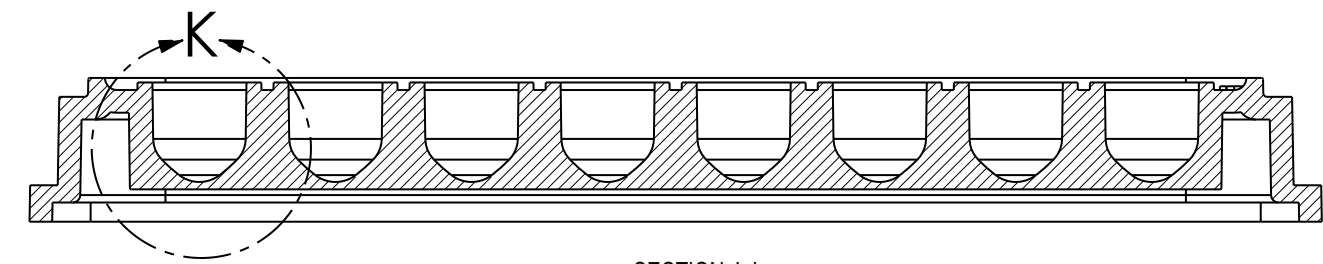
| REVISIONS |             |      |          |
|-----------|-------------|------|----------|
| REV.      | DESCRIPTION | DATE | APPROVED |
| -         | See Sheet1  | -    | -        |



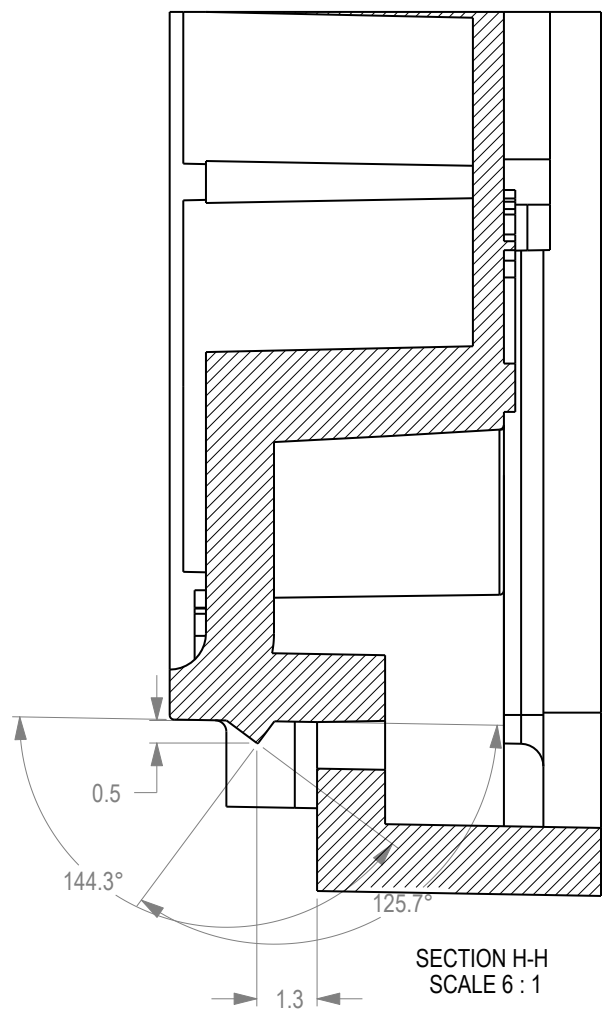
SECTION F-F  
SCALE 6:1



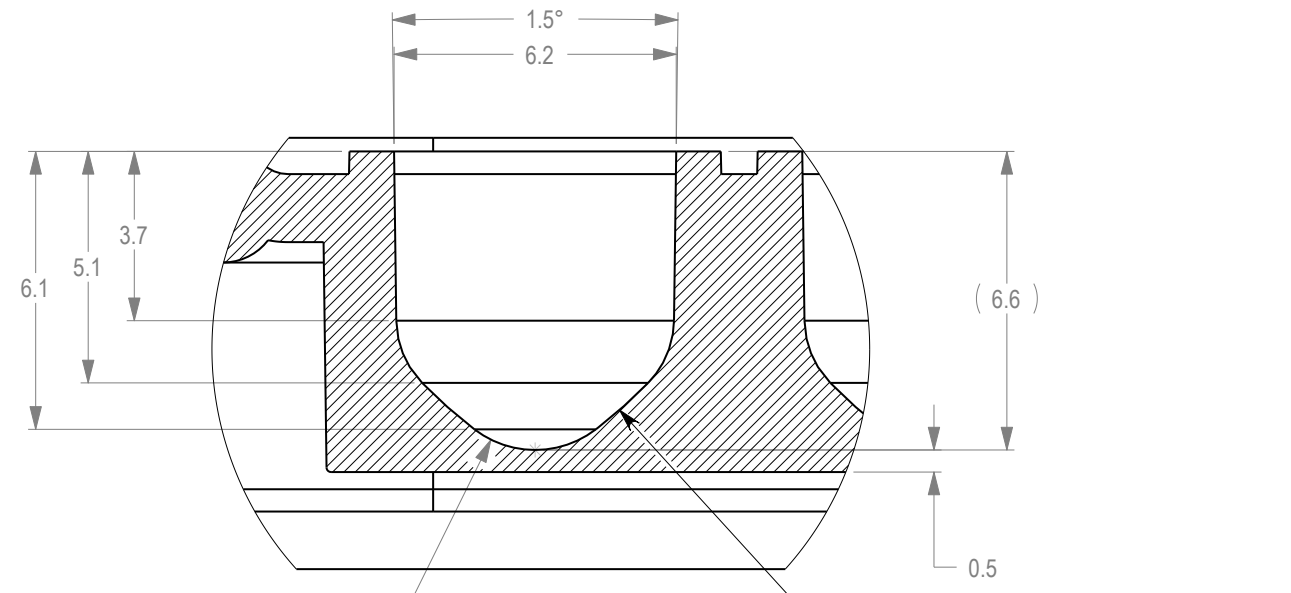
SECTION G-G  
SCALE 2:1



SECTION J-J  
SCALE 2:1



SECTION H-H  
SCALE 6:1



DETAIL K  
SCALE 6:1

|   |          |                  |               |
|---|----------|------------------|---------------|
| <b>EXPERTISE ENGINEERING</b>                                  |          |                  |               |
| (858) 945-6832  |          | WWW.EXP-ENG.COM  |               |
| TITLE <b>TRAY, 2.4MM SIDES,<br/>96 WELLS X 100uL, (COLOR)</b> |          |                  |               |
| SIZE  | DWG. NO. | FILENAME         | REV. <b>G</b> |
| B   | G        | 10001-XXX-G-Tray |               |
| SCALE   |          |                  | SH 4 OF 4     |
| 1:1   |          |                  |               |

THIS DOCUMENT CONTAINS CONFIDENTIAL INFORMATION. DO NOT DISCLOSE TO OTHERS EXCEPT AS AUTHORIZED BY EXPERTISE ENGINEERING.

**10001-XXX REV: G**